

LED Linear Luminaire

Series EXLUX 6402



www.stahl.de



- > Latest LED technology with a high luminous efficacy and a long service life
- > As pendant light fitting or side entry lamp
- > Central locking
- > All-pole disconnection by means of an N/C switch when the lamp is opened (option)

E2



16745E00



The light fittings Series **EXLUX 6402** are suitable for standard lighting and with connection to group or central battery systems for emergency lighting.

	ATEX / IECEx / GOST					
Zone	0	1	2	20	21	22
For use in:			x			x

Explosion Protection	
Global (IECEx)	
Gas and dust	IECEx PTB 13.0049 Ex nR op is IIC T6 Gc or Ex nRc op is IIC T6 Ex tc IIIC T80 °C Dc or Ex tc IIIC T80 °C
Europe (ATEX)	
Gas and dust	PTB 13 ATEX 2020 ⊕ II 3 G Ex nR op is IIC T6 Gc or Ex nRc op is IIC T6 ⊕ II 3 D Ex tc IIIC T80 °C Dc or Ex tc IIIC T80 °C
Certifications and certificates	
Certificates	IECEx, ATEX

WebCode 6402A

LED Linear Luminaire

Series EXLUX 6402

Selection Table

Version	Length mm	Power consumption	Diffusor	Order number	Weight kg
EXLUX 6402	700	28 W	without	6402/1142-0200-251	4.410
			with	6402/1182-0200-251	4.460
	1310	52 W	without	6402/1244-0200-251	6.532
			with	6402/1284-0200-251	6.632

Order Number Supplement

Connection	5-wire cage clamp terminal, without through wiring	6402/1...-020-.51
	5-wire cage clamp terminal, with through wiring	6402/1...-520-.51
	5-wire screw terminal, without through wiring	6402/1...-020-.81
	5-wire screw terminal, with through wiring	6402/1...-520-.81
Switching off	Standard: without	6402/1...-...0-...1
	Special: with switch 8080, 2-pole	6402/1...-...1-...1
Cable glands	1 x M25 x 1.5 cable gland and 2 x M25 x 1.5 stopping plugs	6402/1...-...20-.2.1
	3 x M20 with metal plate without cable glands or stopping plugs	6402/1...-...20-.1.1

NOTE

The light fittings are delivered without mounting material.
These accessories must be ordered separately!

Technical Data

Electrical data

Ballast	AC: 220 V ... 240 V \pm 10 %; 50 ... 60 Hz DC: 196 V ... 240 V \pm 10 %															
Inrush current	$I_{peak} = 53$ A; $\Delta t = 200\mu s$ max. light fittings per circuit breaker:															
	<table border="1"> <thead> <tr> <th>Typ</th> <th>10 A</th> <th>16 A</th> <th>20 A</th> <th>25 A</th> </tr> </thead> <tbody> <tr> <td>B</td> <td>8</td> <td>13</td> <td>16</td> <td>20</td> </tr> <tr> <td>C</td> <td>13</td> <td>22</td> <td>27</td> <td>34</td> </tr> </tbody> </table>	Typ	10 A	16 A	20 A	25 A	B	8	13	16	20	C	13	22	27	34
Typ	10 A	16 A	20 A	25 A												
B	8	13	16	20												
C	13	22	27	34												
Power factor	≥ 0.93															
Disconnection of the light	When opening the luminaire Switch with safety lock (optional); when opening the central lock all poles of the voltage supply to the ballast are disconnected; contacts of the switching element are positive opening, they can only be switched on again when the luminaire trough and the central locking system are closed.															

Luminous characteristics

Colour temperature	5700 K	
Colour rendering	$R_a \geq 70$	
Luminous flux	6402/11.2-...-...1 (28 W)	6402/12.4-...-...1 (52 W)
	at $T_a = 25^\circ C$	
without diffusor		
luminous flux	3150 lm	5800 lm
Luminaire efficacy	113 lm/W	111 lm/W
Light output ratio	92 %	92 %
with diffusor		
luminous flux	2760 lm	5040 lm
Luminaire efficacy	99 lm/W	97 lm/W
Light output ratio	81 %	82 %
Luminous flux decrease at $T_a = 55^\circ C$ min. 85% of the nominal value.		

LED Linear Luminaire

Series EXLUX 6402



Technical Data

Ambient conditions	
Operating temperature range	-30 °C ... +55 °C
Storage	-30 °C ... +75 °C

Service life				
Service life		$T_a \leq 25\text{ °C}$	$T_a \leq 45\text{ °C}$	$T_a \leq 55\text{ °C}$
		L ₇₀ B ₁₀ C ₁₀	100,000 h	50,000 h
L _x B _y C _z At the end of the service life: • Luminous flux decrease to "x" percent • max. "y" percent of all light fittings fall below "x" • max. "z" percent of all light fittings break down completely				

Mechanical data	
Degree of protection	IP66 / IP67 (IEC 60598)
Protection class	I (with internal PE connection)
Material	
Enclosure	
Material	Polyester resin, glass fibre-reinforced
Colour	colour grey, similar to RAL 7035
Gasket	Silicone foam gasket in the lamp cover
Lamp cover	Polycarbonate
Lamp locking	Central locking which can be opened/closed using a socket key M8 / wrench size 13, hinged lamp cover

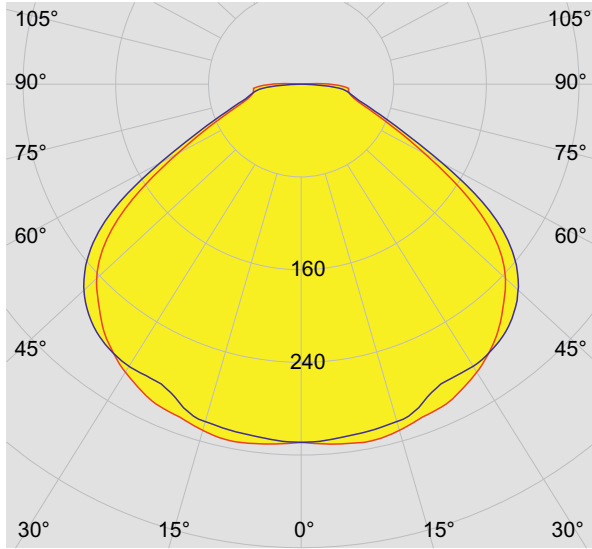
Mounting / Installation	
Cable glands	<p>Plastic: 1 x M25 x 1.5 cable gland 8161 (Standard) 1 x M25 x 1.5 stopping plug 8290 1 x M20 x 1.5 cable gland 8161 with red plug (test opening for restricted breathing test)</p> <p>Metal: 2 x metal plates M20 x 1.5 connected by means of PE for metal cable glands Attention: cable glands must be ordered separately.</p> <p>Special: max. 4 drilled holes for M20, M25, NPSM ½" max. 2 drilled holes for NPT ¾"</p> <p>Note: Use a drilled hole as test opening for the restricted breathing test.</p>
Connection	<p>Standard: Spring clamp terminals 5-pole: L1, L2, L3, N, PE (with through wiring) Clamping range: 1 x 0.75 ... 4 mm² (solid/finely stranded) (2 free clamping units for each pole available)</p> <p>Special: Terminal block with covering 5-pole: L1, L2, L3, N, PE Clamping range: 2x 0.75 ... 6 mm² (solid); 2 x 0.75 ... 4 mm² (finely and extra finely stranded)</p>
Through wiring	<p>Standard light fitting with Light fittings are equipped with internal through wiring. Ingoing and outgoing leads can be connected to the opposite sides. Terminals: see techn. data Wiring cross section: 2.5 mm² for max. 16 A.</p> <p>Optional without On the connection side, there are 2 bores M25 x 1.5 for cable entries for ingoing and outgoing wiring of the connection line (ingoing and outgoing leads on one side).</p>
Assembly	<p>Standard light fitting</p> <p>2 x M8 insert nuts in the enclosure</p> <p>Mounting grooves in the enclosure for use of fastening and ceiling rails for variable luminaire mounting (variable mounting distances for luminaires length 700 mm: 320 ... 480 mm, length 1310 mm: 670 .. 930 mm)</p>

E2

LED Linear Luminaire

Series EXLUX 6402

Light distribution curves

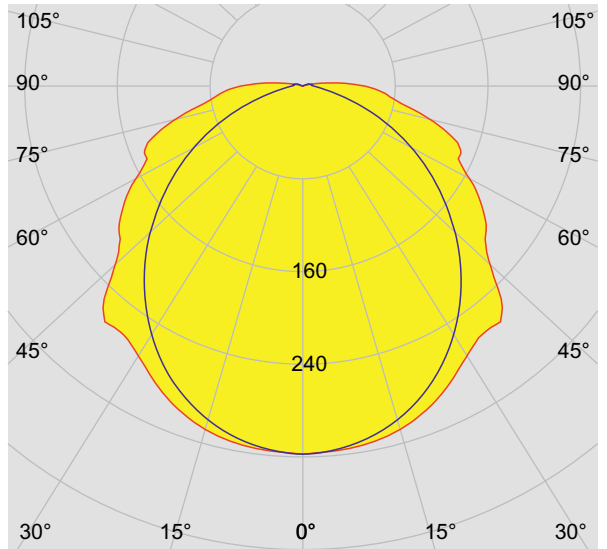


cd/klm 100%

— C0 - C180 — C90 - C270

16615E00

28 W without diffusor

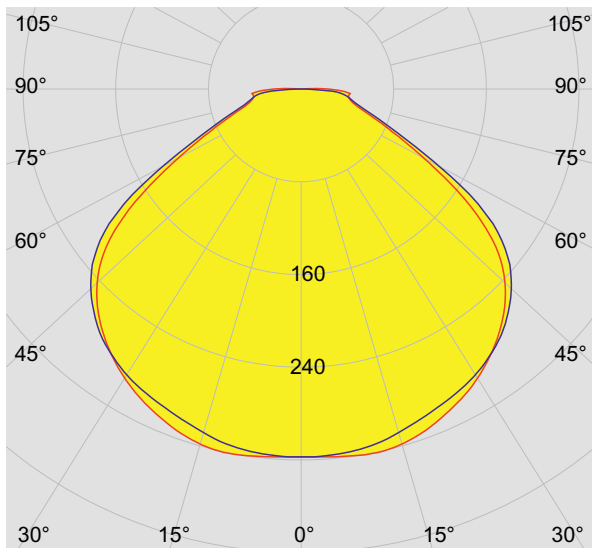


cd/klm 100%

— C0 - C180 — C90 - C270

16616E00

28 W with diffusor

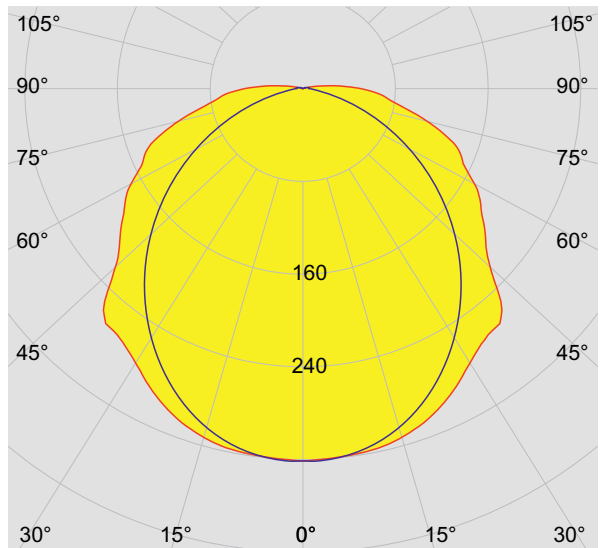


cd/klm 100%

— C0 - C180 — C90 - C270

16617E00

52 W without diffusor



cd/klm 100%

— C0 - C180 — C90 - C270

16618E00

52 W with diffusor

LED Linear Luminaire

Series EXLUX 6402



Accessories and Spare Parts


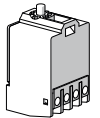
Designation	Figure	Description	Art. no.	Weight kg	
Lamp cover		for luminaire L=700	222427	0.639	
		for luminaire L=1310	222428	1.149	
Socket key	 15507E00	M8 / wrench size 13; to open/close the central locking	222430	0.210	
Ring bolt	 05378E00	M8, direct mounting in insert nuts, 1 pair	115736	0.120	
Pipe clamp	 15583E00	R 1 1/2"	222459	1.200	
		R 1 1/4"	222458	1.250	
		R 2"	222460	1.300	
		with mounting rail for a variable mounting distance; Material: stainless steel 1 pair			
Mounting bracket	 15585E00	Mounting clamp mounted on a mounting rail for a variable mounting distance; 1 pair	222456	0.400	
Mounting rail	 15584E00	for a variable mounting distance 1 pair	222826	0.300	
Pole mounting sleeve	 16985E00	for the subsequent mounting on lights 18 W and 36 W, completely with assembly parts	227512	3.300	
Ceiling and wall-mounting bracket	 15588E00	1 pair mounted on a mounting rail for a variable mounting distance; Material: stainless steel Lamp can be swiveled in steps of 15°	222827	2.400	
Bracket for wall mounting with tube	 05460E00	for side entry lamp; with tube, length 400 mm, \varnothing 42 mm	108947	2.480	
Adapter plates	 05755E00	1 x M20 x 1.5	1 piece	115815	0.070
		1 x M25 x 1.5	1 piece	115818	0.070
		1 x NPSM 1/2"	1 piece	115821	0.070
		1 x NPT 3/4"	1 piece	115824	0.070
		2 x M20 x 1.5	1 piece	115826	0.060
		2 x M25 x 1.5	1 piece	115828	0.060
		2 x NPSM 1/2"	1 piece	115829	0.060
		for use together with metal cable glands; the metal cable glands are integrated in the earthing system via adapter plates			

E2

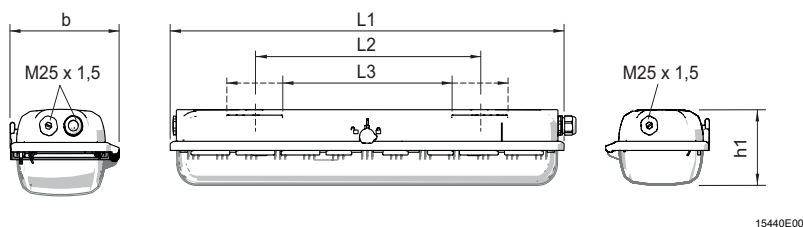
LED Linear Luminaire

Series EXLUX 6402

Accessories and Spare Parts

Designation	Figure	Description	Art. no.	Weight kg
Handheld testing instrument for gastight enclosures	 11006E00	For testing of restricted breathing of gastight enclosures of type Ex nR	230434	
Switch	 10809E00	Switching element 8080/1-3-L, 2 normally closed contacts	132527	0.025

Dimensional Drawings (All Dimensions in mm [inches]) - Subject to Alterations



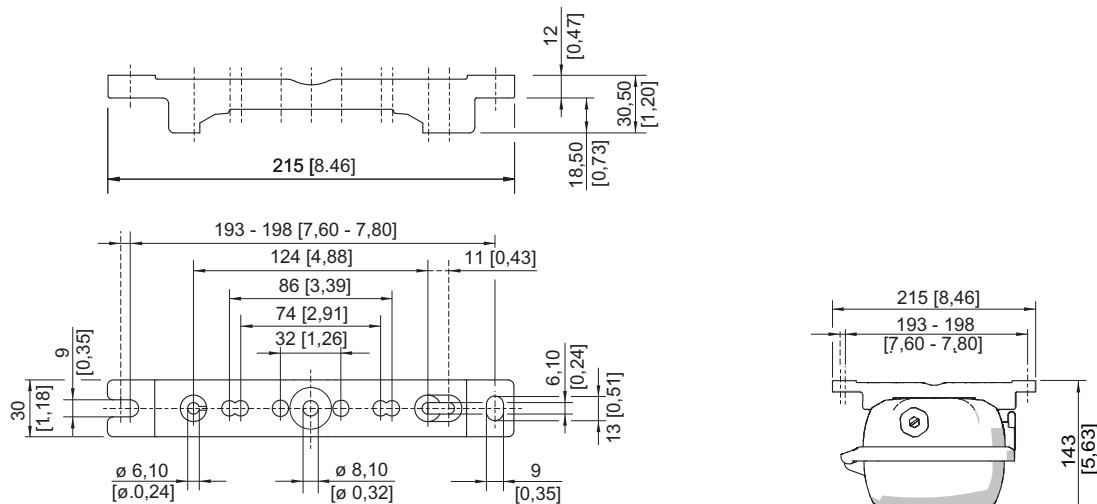
Dimensions	Luminaire	
	28 W	52 W
L1	700 [27.56]	1310 [51.57]
L2 ¹⁾	400 [15.75]	800 [31.50]
L3 ²⁾	320 ... 480 [12.60 ... 18.90]	670 ... 930 [26.38 ... 36.61]
b	184 [7.24]	184 [7.24]
h1	125 [4.92]	125 [4.92]

¹⁾ fixed mounting distance

²⁾ variable mounting distance

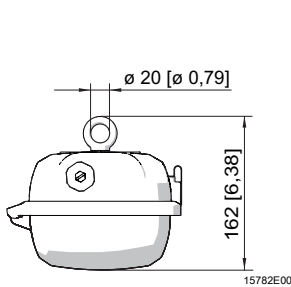
EXLUX 6402 Standard luminaire

Dimensional drawings for assembly parts and accessories (all dimensions in mm) - Subject to alterations

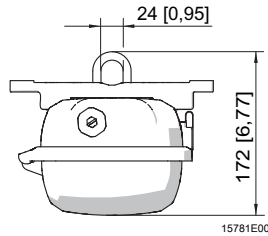


Mounting rail

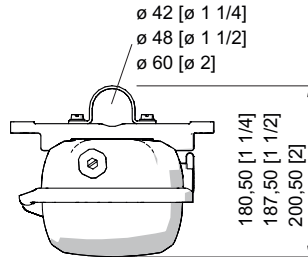
Dimensional drawings for assembly parts and accessories (all dimensions in mm) - Subject to alterations



Ring bolt fitted in insert nut of light fitting

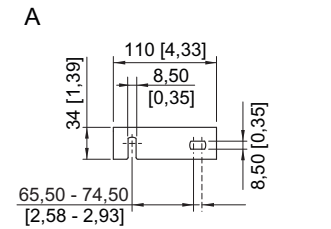
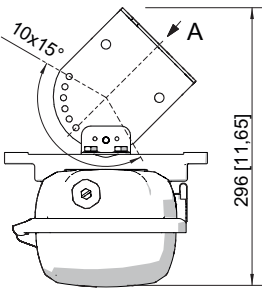


Mounting bracket fitted in mounting rail



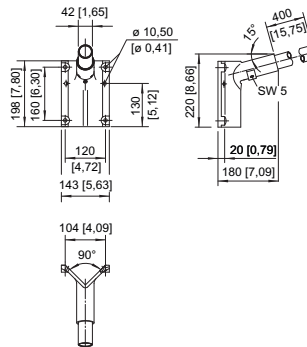
Pipe clamp fitted in mounting rail

15783E00



Wall mounting bracket fitted in mounting rail

15780E00



Bracket for wall mounting with pipe section

03257E00

We reserve the right to make alterations to the technical data, dimensions, weights, designs and products available without notice. The illustrations cannot be considered binding.