

Linear Luminaire with LED

Series EXLUX 6002



www.stahl.de



16707E00

- > Latest LED technology with a high luminous efficacy and a long service life
- > As pendant light fitting or pole mounted light fitting
- > Central locking
- > All-pole disconnection by means of an N/C switch when the lamp is opened

E2



The luminaires with LED Series **EXLUX 6002** are suitable for general lighting of indoor and outdoor areas. The luminaires with LED were designed for 1 to 1 replacing of luminaires with fluorescent lamps. An equivalent luminous flux by lower energy consumption ensures an increase in efficiency of the lighting system.

Zone	ATEX / IECEx					
	0	1	2	20	21	22
For use in:		x	x		x	x

Explosion Protection	
Global (IECEx)	
Gas and dust	IECEx IBE 14.0035 Ex d e o p is IIB T4 Gb Ex tb IIIC T100°C Db
Europe (ATEX)	
Gas and dust	IBExU 14ATEX1088 ⊕ II 2 G Ex d e o p is IIB T4 Gb ⊕ II 2 D Ex tb IIIC T100 °C Db
Certifications and certificates	
Certificates	IECEx, ATEX

WebCode 6002A

Linear Luminaire with LED

Series EXLUX 6002

Selection Table

Version	Length mm	Power consumption	Diffusor	Order number	Weight kg
EXLUX 6002	700	28 W	without	6002/1142-0301-151	5.430
			with	6002/1182-0301-151	5.480
	1310	52 W	without	6002/1244-0301-151	7.752
			with	6002/1284-0301-151	7.852

Order Number Supplement

Connection	5-wire spring clamp terminal max. 4 mm ² , without through wiring	6002/1...-0...-.5.
	5-wire spring clamp terminal max. 4 mm ² , with through wiring	6002/1...-5...-.5.
	5-wire screw terminal max. 6 mm ² , without through wiring	6002/1...-0...-.8.
	5-wire screw terminal max. 6 mm ² , with through wiring	6002/1...-5...-.8.
Cable glands	1 x M25 x 1.5 cable gland and 2 x M25 x 1.5 stopping plugs	6002/1...-...-1..
	3 x M20 with metal plate without cable glands or stopping plugs	6002/1...-...-2..
Switching off	Standard: with switch 8080, 2-pole	6002/1...-...-1-...
	Option: without	6002/1...-...-0-...

NOTE

The light fittings are delivered without mounting material.
These accessories must be ordered separately!

Technical Data

Electrical data

Ballast	AC: 220 V ... 240 V ± 10 %; 50 ... 60 Hz DC: 200 V ... 250 V ± 10 %															
Inrush current	$I_{peak} = 53 \text{ A}$; $\Delta t = 200 \mu\text{s}$ max. light fittings per circuit breaker:															
	<table border="1"> <thead> <tr> <th>Typ</th> <th>10 A</th> <th>16 A</th> <th>20 A</th> <th>25 A</th> </tr> </thead> <tbody> <tr> <td>B</td> <td>8</td> <td>13</td> <td>16</td> <td>20</td> </tr> <tr> <td>C</td> <td>13</td> <td>22</td> <td>27</td> <td>34</td> </tr> </tbody> </table>	Typ	10 A	16 A	20 A	25 A	B	8	13	16	20	C	13	22	27	34
Typ	10 A	16 A	20 A	25 A												
B	8	13	16	20												
C	13	22	27	34												
Power factor	≥ 0.93															
Disconnection of the light	When opening the luminaire Switch with safety lock; when opening the central lock all poles of the voltage supply to the ballast are disconnected; contacts of the switching element are positive opening, they can only be switched on again when the translucent cover and the central locking system are closed.															

Luminous characteristics

Colour temperature	5700 K	
Colour rendering	Ra ≥ 70	
Luminous flux	6002/11.2-...-...1 (28 W)	6002/12.4-...-...1 (52 W)
	at T _a = 25 °C	
	without diffusor	
luminous flux	3000 lm	6000 lm
Luminaire efficacy	107 lm/W	115 lm/W
Light output ratio	87 %	87 %
	with diffusor	
luminous flux	2400 lm	4650 lm
Luminaire efficacy	86 lm/W	89 lm/W
Light output ratio	68 %	68 %
	Luminous flux decrease at T _a = 55 °C down to 85% of the nominal value.	

Ambient conditions

Operating temperature range	-30 °C ... +55 °C luminaires without through wiring -30 °C ... +50 °C luminaires with through wiring
Storage	-30 °C ... +75 °C

Linear Luminaire with LED

Series EXLUX 6002



Technical Data

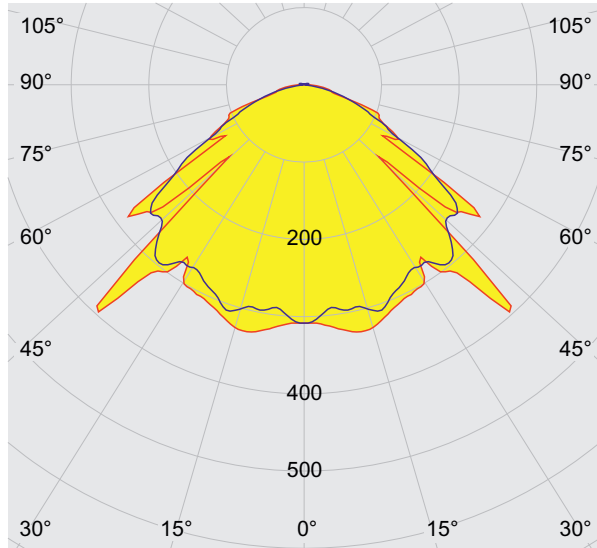
Service life				
Service life		$T_a \leq 25\text{ °C}$	$T_a \leq 45\text{ °C}$	$T_a \leq 55\text{ °C}$
	L ₇₀ B ₁₀ C ₁₀	100,000 h	50,000 h	40,000 h
	<p>L_xB_yC_z At the end of the service life:</p> <ul style="list-style-type: none"> • Luminous flux decrease to "x" percent • max. "y" percent of all light fittings fall below "x" • max. "z" percent of all light fittings break down completely 			
Mechanical data				
Degree of protection	IP66 / IP67 (IEC 60598)			
Protection class	I (with internal PE connection)			
Impact strength (IK code)	IK10 (IEC 62262)			
Material				
Enclosure				
Material	Polyester resin, glass fibre-reinforced			
Colour	colour grey, similar to RAL 7035			
Gasket	Silicone foam gasket in the lamp cover			
Lamp cover	Polycarbonate			
Lamp locking	Central locking which can be opened/closed using a socket key M8 / wrench size 13, hinged lamp cover			
Mounting / Installation				
Cable glands	Standard luminaire			
	Plastic:	2 x M25 x 1.5 cable gland 8161 and 1 x M25 x 1.5 stopping plugs 8290 (enclosed)		
	Metal:	2 x metal plates M20 x 1.5 connected by means of PE for metal cable entries Attention: cable entries must be ordered separately		
	Special:	max. 4 bores for M20, M25, NPSM ½" max. 2 bores for NPT ¾"		
	Metal cable glands:	M20 x 1.5, M25 x 1.5; earthing of the metal cable entries by means of metal plates		
Connection	Standard:	Spring clamp terminals 5-pole: L1, L2, L3, N, PE (without through wiring) Clamping range: 1 x 0.75 ... 4 mm ² (solid/finely stranded) (2 free clamping units for each pole available)		
	Special:	Terminal block with covering 5-pole: L1, L2, L3, N, PE Clamping range: 2x 0.75 ... 6 mm ² (solid); 2 x 0.75 ... 4 mm ² (finely and extra finely stranded)		
Through wiring	Standard luminaire	without On the connection side, there are 2 bores M25 x 1.5 for cable entries for ingoing and outgoing wiring of the connection line (ingoing and outgoing leads on one side).		
	Optional	with Light fittings are equipped with internal through wiring. Ingoing and outgoing leads can be connected to the opposite sides. Terminals: see techn. data Wiring cross section: 2.5 mm ² for max. 16 A.		
Assembly	Standard luminaire	2 x M8 insert nuts in the enclosure Mounting grooves in the enclosure for use of fastening and ceiling rails for variable luminaire mounting (variable mounting distances for luminaires length 700 mm: 320 ... 480 mm, length 1310 mm: 670 .. 930 mm)		

E2

Linear Luminaire with LED

Series EXLUX 6002

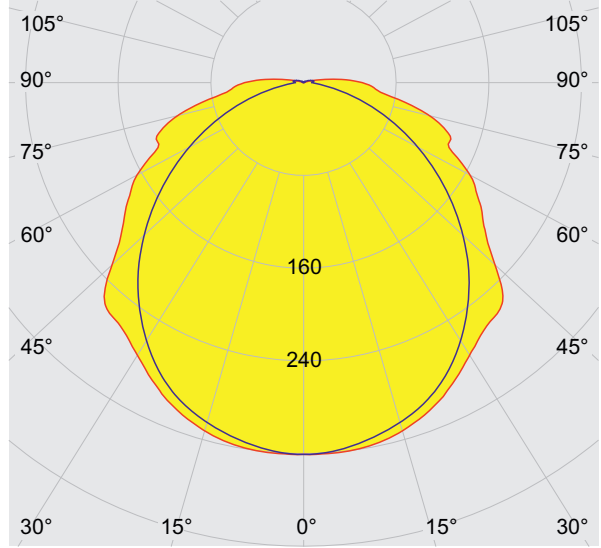
Light Distribution Curves



cd/klm 100%
 — C0 - C180 — C90 - C270

16683E00

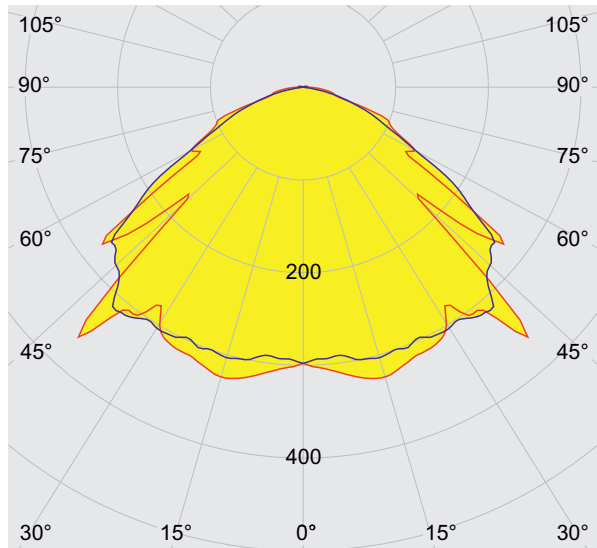
28 W without diffusor



cd/klm 100%
 — C0 - C180 — C90 - C270

16723E00

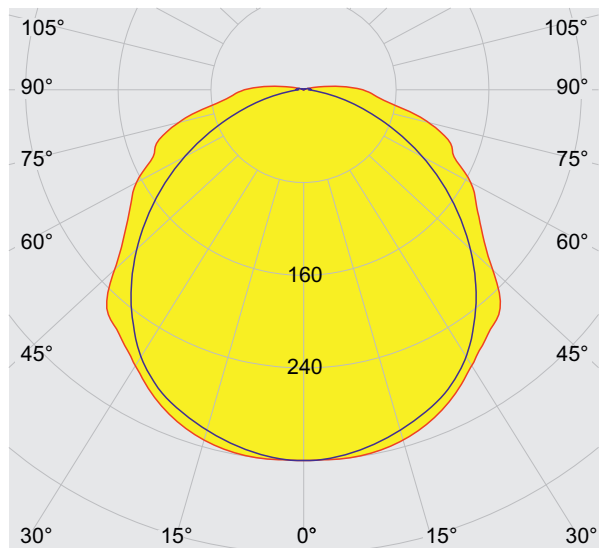
28 W with diffusor



cd/klm 100%
 — C0 - C180 — C90 - C270

16724E00

52 W without diffusor



cd/klm 100%
 — C0 - C180 — C90 - C270

16725E00

52 W with diffusor

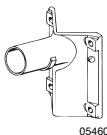
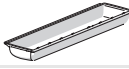
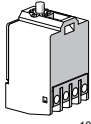
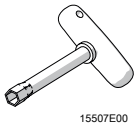
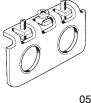
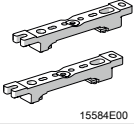
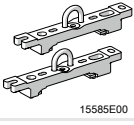

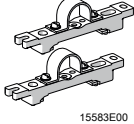

Linear Luminaire with LED

Series EXLUX 6002



E2

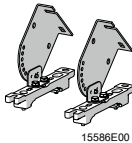
Accessories and Spare Parts

Designation	Figure	Description	Art. no.	Weight kg	
Bracket for wall mounting with tube	 05460E00	for side entry lamp; with tube, length 400 mm, \varnothing 42 mm	108947	2.480	
Translucent cover		for luminaire L=700	222427	0.639	
		for luminaire L=1310	222428	1.149	
Switch	 10809E00	Switching element 8080/1-3-L, 2 normally closed contacts	132527	0.025	
Socket key	 15507E00	M8 / wrench size 13; to open/close the central locking	222430	0.210	
Adapter plates	 05755E00	1 x M20 x 1.5	1 piece	115815	0.070
		1 x M25 x 1.5	1 piece	115818	0.070
		1 x NPSM 1/2"	1 piece	115821	0.070
		1 x NPT 3/4"	1 piece	115824	0.070
		2 x M20 x 1.5	1 piece	115826	0.060
		2 x M25 x 1.5	1 piece	115828	0.060
		2 x NPSM 1/2"	1 piece	115829	0.060
		for use together with metal cable glands; the metal cable glands are integrated in the earthing system via adapter plates			
Mounting rail	 15584E00	for a variable mounting distance	1 pair	222826	0.300
Mounting bracket	 15585E00	mounting clamp mounted on a mounting rail for a variable mounting distance	1 pair	222456	0.400
Pole mounting sleeve	 16985E00	for the subsequent mounting on lights 18 W and 36 W, completely with assembly parts	227512	3.300	
Pipe clamp	 15583E00	R 1 1/2"		222459	1.200
		R 1 1/4"		222458	1.250
		R 2"		222460	1.300
		with mounting rail for a variable mounting distance; Material: stainless steel	1 pair		
Ring bolt	 05378E00	M8, direct mounting in insert nuts	1 pair	115736	0.120

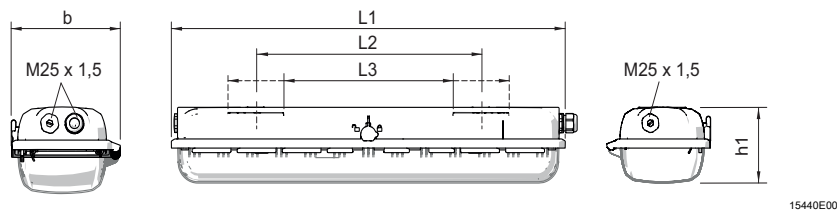
Linear Luminaire with LED

Series EXLUX 6002

Accessories and Spare Parts

Designation	Figure	Description	Art. no.	Weight kg
Ceiling and wall-mounting bracket		1 pair mounted on a mounting rail for a variable mounting distance; Material: stainless steel Lamp can be swiveled in steps of 15°	222827	2.400

Dimensional Drawings (All Dimensions in mm [inches]) - Subject to Alterations

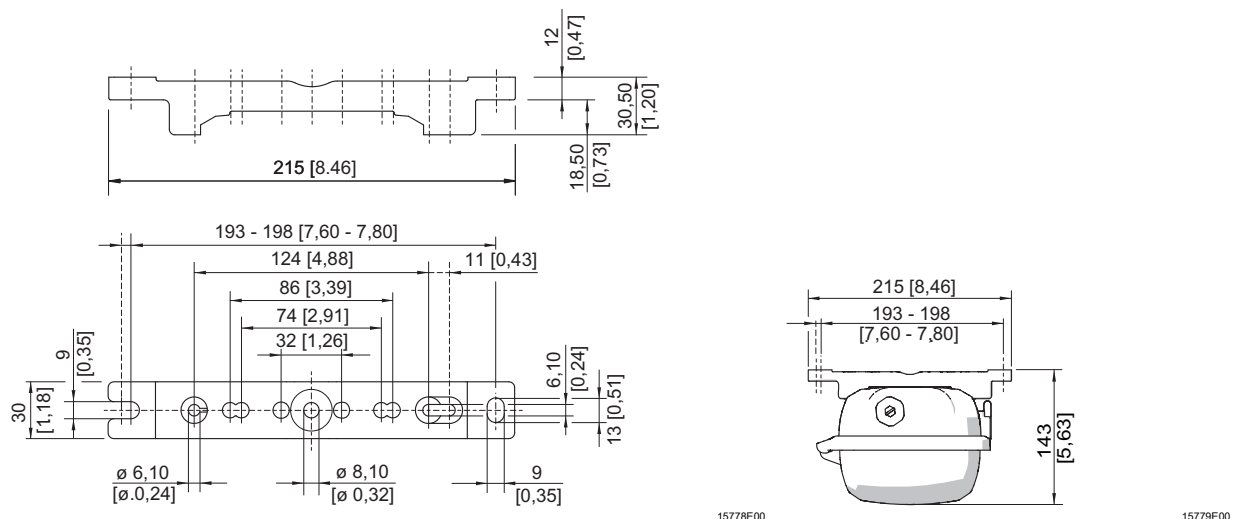


Dimensions	Luminaire	
	28 W	52 W
L1	700 [27.56]	1310 [51.57]
L2 ¹⁾	400 [15.75]	800 [31.50]
L3 ²⁾	320 ... 480 [12.60 ... 18.90]	670 ... 930 [26.38 ... 36.61]
b	184 [7.24]	184 [7.24]
h1	125 [4.92]	125 [4.92]

¹⁾ fixed mounting distance ²⁾ variable mounting distance

EXLUX 6002 Standard luminaire

Dimensional Drawings for Assembly Parts and Accessories (All Dimensions in mm) - Subject to Alterations



Mounting rail

Linear Luminaire with LED

Series EXLUX 6002



Dimensional Drawings for Assembly Parts and Accessories (All Dimensions in mm) - Subject to Alterations

The drawings show the following parts and their dimensions:

- Ring bolt fitted in insert nut of the luminaire:** Drawing 15782E00 shows a ring bolt with a diameter of $\varnothing 20$ [0,79] and a height of 162 [6,38].
- Mounting bracket fitted in mounting rail:** Drawing 15781E00 shows a mounting bracket with a height of 172 [6,77] and a width of 24 [0,95].
- Pipe clamp fitted in mounting rail:** Drawing 15783E00 shows a pipe clamp with three options: $\varnothing 42$ [$\varnothing 1\ 1/4$], $\varnothing 48$ [$\varnothing 1\ 1/2$], and $\varnothing 60$ [$\varnothing 2$]. The height is 180,50 [1 1/4], 187,50 [1 1/2], and 200,50 [2] respectively.
- Wall mounting bracket fitted in mounting rail:** Drawing 15780E00 shows a wall mounting bracket with a height of 296 [11,65] and a width of 110 [4,33]. It includes a detail 'A' showing a 10x15 degree angle and a height of 34 [1,39]. The mounting rail width is 65,50 - 74,50 [2,58 - 2,93].
- Bracket for wall mounting with pipe section:** Drawing 03257E00 shows a bracket with a height of 104 [4,09] and a 90 degree angle. It includes a detail of a pipe section with a diameter of $\varnothing 10,50$ [$\varnothing 0,41$] and a length of 400 [15,75]. Other dimensions include 198 [7,80], 160 [6,30], 120 [4,72], 143 [5,63], 130 [5,12], 220 [8,66], 20 [0,79], and 180 [7,09].

E2

We reserve the right to make alterations to the technical data, dimensions, weights, designs and products available without notice. The illustrations cannot be considered binding.